

1 2 3 4 5 6 7 8

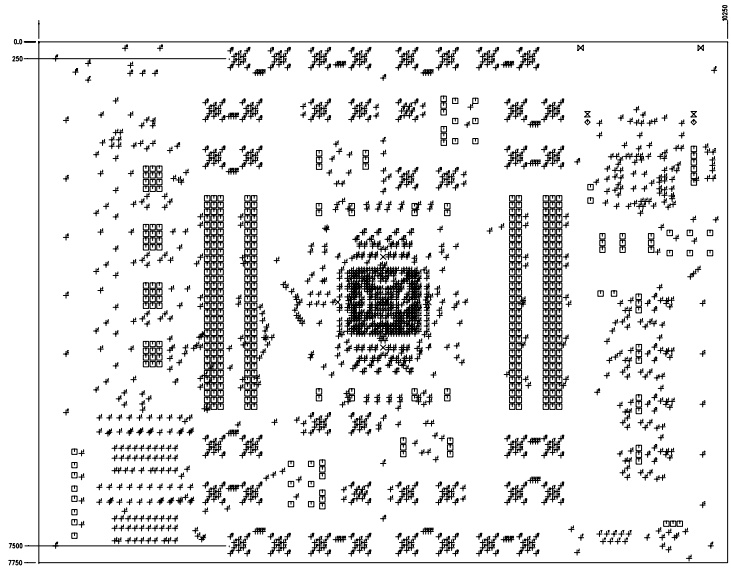
REV 01 THE INFORMATION IN THIS DRAWING IS THE SOLE PROPERTY OF THE XILINX CORPORATION. ANY REPRODUCTION IN PART OR WHOLE WITHOUT THE WRITTEN PERMISSION OF XILINX CORPORATION IS PROHIBITED.

DESCRIPTION  
FABRICATION, HW-V2P-ML321

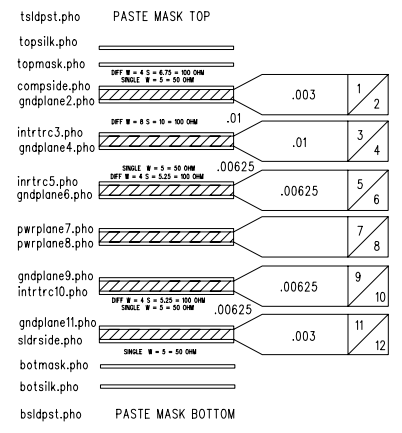
DWG NO.  
1280314

SIZE	QTY	SYM	PLTD
65	4	X	MPLTD
37	468	□	PLTD
87	2	◇	MPLTD
67	2	X	MPLTD
52	2	X	MPLTD
250	11	C	PLTD
31	12	D	PLTD
105	6	E	PLTD
125	9	F	PLTD
95	8	G	PLTD
73	5	H	PLTD
12	1131	J	PLTD
8	32	T	PLTD
11.81	64	U	PLTD
15.75	252	V	PLTD
66.63	368	W	PLTD
23.62	42	X	PLTD
45	9	Y	PLTD
39.37	2	Z	PLTD

REVISIONS			
REV	DESCRIPTION	DATE	APPROVED
01	INITIAL RELEASE	10-04-03	



COMPONENT VIEW



- 15. BLIND VIA USE 8 MIL DRILL
- 14. PLATING : EMERSION GOLD OVER COPPER.
- 13. IMPEDANCE TOLERANCE +/- 5%.
- 12. ALL HOLES PLATED THROUGH, SIZES SPECIFIED ARE AFTER PLATING.
- 11. HOLE TOLERANCE +/- .003, AFTER PLATING.
- 10. REMOVE ALL SHARP EDGES AND BURRS.
- 9. SOLDERMASK : LPI, COLOR=GREEN.
- 8. RF - > 3.125GHZ FREQUENCIES
- 7. MARK UL RECOGNIZED MANUFACTURER'S IDENTIFICATION LETTERS AND/OR SYMBOLS.
- 6. USE ARTMASTER # 0531288
- 5. BOARD THICKNESS = .090" +/- .010
- 4. SILKSCREEN TOP AND BOTTOM; WHITE USING NON-CONDUCTIVE PAINT. (WARNOW CAT-L-INK PROCESS).
- 3. MATERIAL = FR-4 OR EQUIVALENT ASSUMED ER 4.2 +/- 0.25
- 2. FABRICATE IN ACCORDANCE WITH IPC-600 CLASS 2 LESS THAN 1.5X BOW AND TWIST. IPC-R-700 UL 796 AND UL 94 INDUSTRY STANDARD.
- 1. BOARD IS SHOWN FROM COMPONENT SIDE.

NOTES: UNLESS OTHERWISE SPECIFIED:

UNLESS OTHERWISE SPECIFIED ALL DIMENSIONS ARE IN INCHES TOLERANCES ARE: FRACTIONS ± DECIMALS ± ANGLES ± ° XXX ± .010	CAD GENERATED DRAWING, DO NOT MANUALLY UPDATE		XILINX® 2100 LOGIC DRIVE SAN JOSE, CALIFORNIA 95124
	APPROVALS	DATE	
MATERIAL	CHECKED	B.M.	TITLE
3	RES ENG		FABRICATION DRAWING
FINISH	MFG ENG		HW-V2P-ML321
14 9	DUAL ENG		SIZE
DO NOT SCALE DRAWING	APPROVED		D FSCM NO.
			DWG NO.
			1280314
			REV.
			01
			SCALE 1:1
			SHEET 1 OF 1

1 2 3 4 5 6 7 8