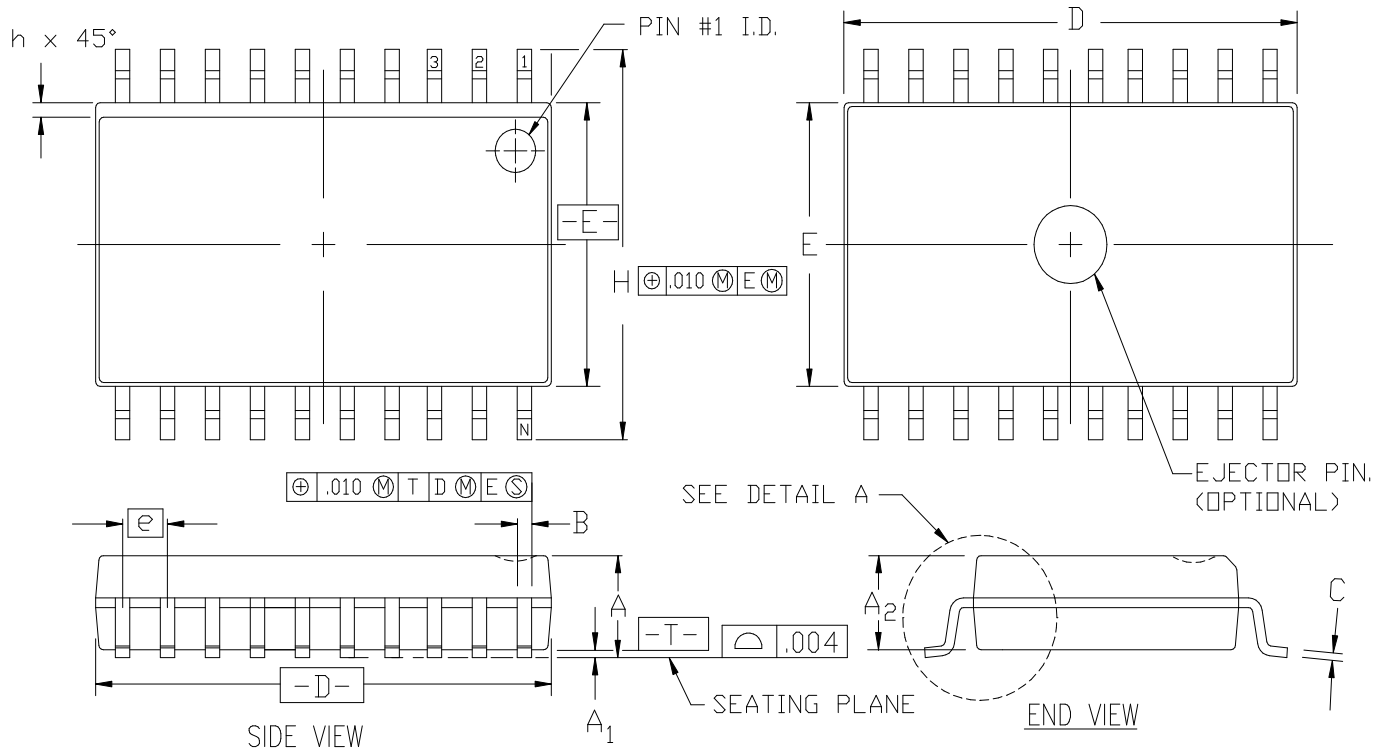
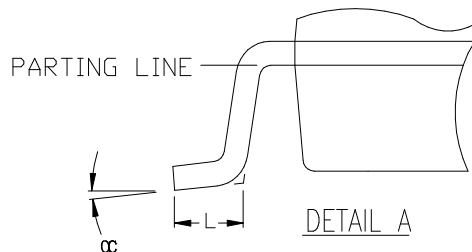


TOP VIEW

BOTTOM VIEW



SYMBOL	INCHES		
	MIN.	NOM.	MAX.
A	.097	.101	.104
A ₁	.005	.009	.0115
A ₂	.090	.092	.094
B	.014	.016	.019
C	.0091	.010	.0125
D	.500	.505	.510
E	.292	.296	.299
e	.050 BSC		
H	.400	.406	.410
h	.010	--	.029
L	.024	.032	.040
α	0°	5°	8°


NOTES:

- ALL DIMENSIONS AND TOLERANCES CONFORM TO ANSI Y14.5M-1982.
- DIMENSION "D" DOES NOT INCLUDE MOLD PROTRUSION. ALLOWABLE MOLD PROTRUSION SHALL NOT EXCEED .006" PER SIDE.
- DIMENSION "E" DOES NOT INCLUDE MOLD PROTRUSION. ALLOWABLE MOLD PROTRUSION SHALL NOT EXCEED .010" PER SIDE.
- LEAD FINISH: SOLDER PLATE
- CONFORMS TO JEDEC MS-013-AC

20 LEAD SOIC (SO20)