

ISE Design Suite 13: Installation and Licensing Guide

UG798 (v13.4) January 18, 2012



Xilinx is disclosing this user guide, manual, release note, and/or specification (the "Documentation") to you solely for use in the development of designs to operate with Xilinx hardware devices. You may not reproduce, distribute, republish, download, display, post, or transmit the Documentation in any form or by any means including, but not limited to, electronic, mechanical, photocopying, recording, or otherwise, without the prior written consent of Xilinx. Xilinx expressly disclaims any liability arising out of your use of the Documentation. Xilinx reserves the right, at its sole discretion, to change the Documentation without notice at any time. Xilinx assumes no obligation to correct any errors contained in the Documentation, or to advise you of any corrections or updates. Xilinx expressly disclaims any liability in connection with technical support or assistance that may be provided to you in connection with the Information.

THE DOCUMENTATION IS DISCLOSED TO YOU "AS-IS" WITH NO WARRANTY OF ANY KIND. XILINX MAKES NO OTHER WARRANTIES, WHETHER EXPRESS, IMPLIED, OR STATUTORY, REGARDING THE DOCUMENTATION, INCLUDING ANY WARRANTIES OF MERCHANTABILITY, FITNESS FOR A PARTICULAR PURPOSE, OR NONINFRINGEMENT OF THIRD-PARTY RIGHTS. IN NO EVENT WILL XILINX BE LIABLE FOR ANY CONSEQUENTIAL, INDIRECT, EXEMPLARY, SPECIAL, OR INCIDENTAL DAMAGES, INCLUDING ANY LOSS OF DATA OR LOST PROFITS, ARISING FROM YOUR USE OF THE DOCUMENTATION.

© 2012 Xilinx, Inc. XILINX, the Xilinx logo, Virtex, Spartan, ISE, and other designated brands included herein are trademarks of Xilinx in the United States and other countries. All other trademarks are the property of their respective owners.

Revision History

The following table shows the revision history for this document.

Date	Version	Revision
03/01/11	13.1	Initial Xilinx Release.
07/06/11	13.2	Version Updates.
10/19/11	13.3	Version Updates.
01/18/12	13.4	Version Updates.

Table of Contents

Revision History	3
Chapter 1: Download and Installation (13.4)	
Downloading ISE Design Suite 13	7
Installing ISE Design Suite 13: Overview for All Platforms	8
Platform-Specific Installation Instructions	9
Microsoft Windows Installation	9
Starting Installation	9
Setting Environment Variables	9
Linux Installation	9
Starting Installation	9
Setting Environment Variables	9
Installation Flow	10
Accepting Software Licenses	10
Select Xilinx Products to Install	11
Select Installation Options	11
Select Destination Directory	12
Installation Options Summary	13
USB FLEXid Dongle Driver Installation	13
Network Installations	14
UNIX Clients	15
Microsoft Windows Clients	15
Installing to a Mounted Network Drive	15
Obtaining Release 13 Quarterly Releases	15
XilinxNotify	16
XilinxNotify Network Installations	16
Download Center	16
Uninstalling ISE Design Suite 13	16
Uninstalling on Microsoft Windows	16
Uninstalling on Linux	17
Chapter 2: Obtaining and Managing a License (13.4)	
Accessing the Product Licensing Site	19
Product Licensing Accounts	20
LogiCORE IP License Generation In ISE Design Suite 13	20
User Types and Actions	21
Customer Account Administrator	21
End User	21
Evaluation User	21
Creating a License Key File	22
Selecting Products	23
Generating a License	25
End User License Agreements (EULAs)	27
Third-Party Licenses	27

License Generation Confirmation	27
Managing License Key Files	27
Exploring and Retrieving Your Existing License Key Files	29
Modifying a License Key File	29
Reclaiming Deactivated Product Entitlements	29
What Happens to Your License Key File	30
Managing User Access to Product Licensing Account	30
Adding Users	31
Removing Users	31
Installing Your License Key File	31
Node Lock License Installation	31
Floating License Installation on Servers	32
For New License Servers	32
Client Machines Pointing to a Floating License	33

Download and Installation (13.4)

This guide explains how to install and license ISE® Design Suite 13, which includes the Integrated Software Environment (ISE) software, ChipScope™ Pro software, Embedded Tools (including Embedded Development Kit (EDK) and standalone Software Development Kit (SDK), System Generator for DSP software, and PlanAhead™ design tools.

For information on what is new, known issues, and technical support for ISE Design Suite 13, see [ISE Design Suite 13: Release Notes Guide \(UG631\)](#).

This chapter describes how to download and install the ISE® Design Suite 13 software®.

Downloading ISE Design Suite 13

This section explains how to download the ISE Design Suite 13 software.

To begin, open an internet browser and navigate to <http://www.xilinx.com/support/download/index.htm>

All files in the Xilinx Download Center are downloaded using the Akamai download manager. For the optimum download experience:

- Allow pop-ups from entitlenow.com
- Set security settings to allow for secure and non-secure items to be displayed on the same page
- Allow the Akamai download manager to run Java processes

To download the ISE software:

1. Select the Design Tools tab in the web page.
2. Under the Version heading, click the version of the tools you want to download.
3. Click the link for the installer you want to download.

Note: For 13.x, the installers under the ISE Design Suite heading also contain the standalone selections for the Software Development Kit and Lab Tools. Depending on your use case, you may not need to download these separate installation programs if you are downloading the ISE Design Suite installers.

4. Enter your User ID and Password to log into your Xilinx account.

Note: If you do not have a Xilinx account, you must create one in order to download products. An address verification screen appears.

5. Once the current address is correct, click **Next**.
6. The Akamai download manager launches in your browser to complete the download process.

Most files in the Xilinx Download Center are packaged using TAR methods. You will need to use software from a third party provider to unpack them. Consult your IT department for assistance. Commonly used tools for TAR files are 7-ZIP, GNU built-in tools, WinZIP, and

WinRar. These tools are licensed solely by each respective developer, and not by Xilinx. Xilinx hereby disclaims any warranties, express or implied, including warranties of merchantability, fitness for a particular purpose, or noninfringement with respect to these suggested software tools.

Installing ISE Design Suite 13: Overview for All Platforms

This section explains the installation process for all platforms for ISE Design Suite 13. Before installation:

1. Make sure that you have the necessary privileges for the system on which the software will be installed. Some components, such as programming cable device drivers, require administrator-level permissions.
2. Close all open programs before you begin installation.
3. Make sure that your system meets the requirements described in [ISE Design Suite 13: Release Notes Guide \(UG631\)](#) Chapter 3, “Architecture Support and Requirements.”
4. Check the links in the [ISE Design Suite 13: Release Notes Guide \(UG631\)](#) Chapter 2, “Important ISE Design Suite 13 Release Information” for any installation issues that pertain to your system or configuration.
5. If EDK is installed, make sure that the installation is in a directory structure that does not contain spaces.

Note: The ISE Design Suite 13 installers do not set global environment variables, such as XILINX, on Windows. To find out if this affects the way you run Xilinx software, see [“Platform-Specific Installation Instructions.”](#)

Platform-Specific Installation Instructions

This section provides platform-specific instructions for installing ISE Design Suite 13.

Microsoft Windows Installation

This section describes how to start the installation for Microsoft Windows operating systems.

Starting Installation

How you start installation depends on how you obtained the installation program. See “[Downloading ISE Design Suite 13](#)” for details on your options.

- If you downloaded an installation file, decompress that file and run **xsetup.exe**.
- If you received an ISE Design Suite DVD, load the DVD. If the auto-run feature of your DVD drive is enabled, the setup program should start automatically. If it does not, browse to the DVD in Windows Explorer and run **xsetup.exe**.

Setting Environment Variables

When installation is complete, the installation program creates an environment variable batch file. All appropriate Desktop and Program Group shortcuts call this file before launching the target application. A shortcut to a command-line prompt which sets the environment has been created. The shortcut is located at **Xilinx ISE Design Suite 13.4 > Accessories > ISE Design Suite Command Prompt**

To set environment variables in make or script files:

Add **<XILINX installation directory>\settings32.bat** or **settings64.bat** to your script. The numbers 32 or 64 corresponds to the bit-width of the operating system installed on the computer.

Linux Installation

This section describes how to start the installation and set the environment variables for Linux operating systems.

Starting Installation

The method of starting the installation depends on how you have obtained the installation program. See “[Downloading ISE Design Suite 13](#)” for details on your options.

- If you have downloaded an installation file, decompress that file and run the **xsetup** program contained therein.
- If you have ordered and received an ISE Design Suite DVD, load the DVD. Click the setup file in your file manager, or browse to the root of your DVD drive and type **./xsetup**.

Setting Environment Variables

When installation is complete, the installation program creates an environment variables file.

1. Go to the XILINX installation directory.
2. Type either **source settings32.(c)sh** or **source settings64.(c)sh**, as required for your shell.

Note: 32-bit ISE does not work with 64-bit EDK. 64-bit EDK does not work with 32-bit ISE.

To set your environment variables manually or from within your setup script, Xilinx recommends that you copy the settings from the appropriate file for your operating system, as listed above. Xilinx environment variables settings are specific to each operating system platform.

Installation Flow

The following section describes important screens that you will encounter during the installation process.

Note: For each of the following installation steps, click on the text of any item that has a checkbox next to it to obtain more information. Information is displayed in the “Description” area near the bottom of the screen.

Accepting Software Licenses

You must accept two software license agreements. On each Accept Software Agreement screen:

You must accept two software license agreements. On each Accept Software License Agreement screen:

1. Click **I accept the terms of this software agreement**.
2. Click **Next**.

Select Xilinx Products to Install

Select the Xilinx products you want to install.

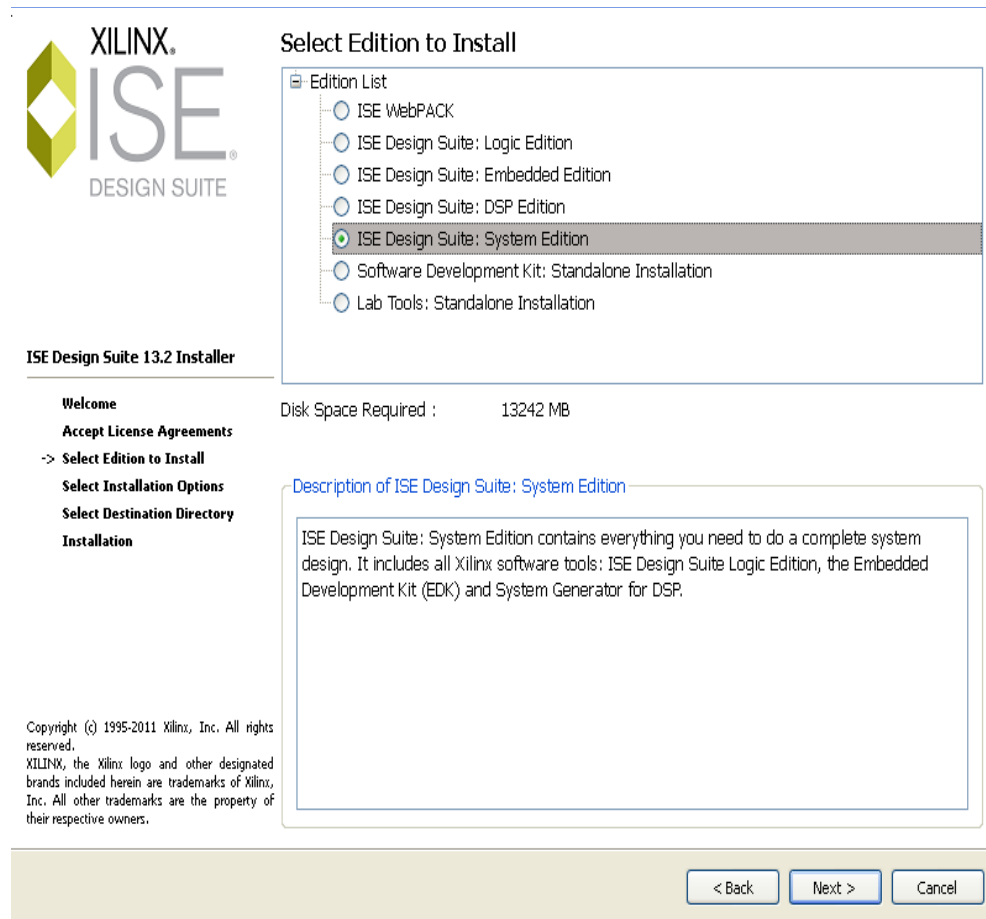


Figure 1-1: ISE Design Suite 13 Installation - Select Xilinx Products Screen

For 13.4, the product selection choices are: WebPACK software, various ISE Design Suite Editions, and two standalone tools.

Note: The ISE WebPACK product installer installs both ChipScope PRO software and the Embedded Development Kit. Although installed, these applications will require a separate license to run.

Select Installation Options

There are several optional installation steps during installation. If selected, these options install toward the end of the installation process, after the main software installation has completed.

Select Xilinx Installation Options from the following screen.

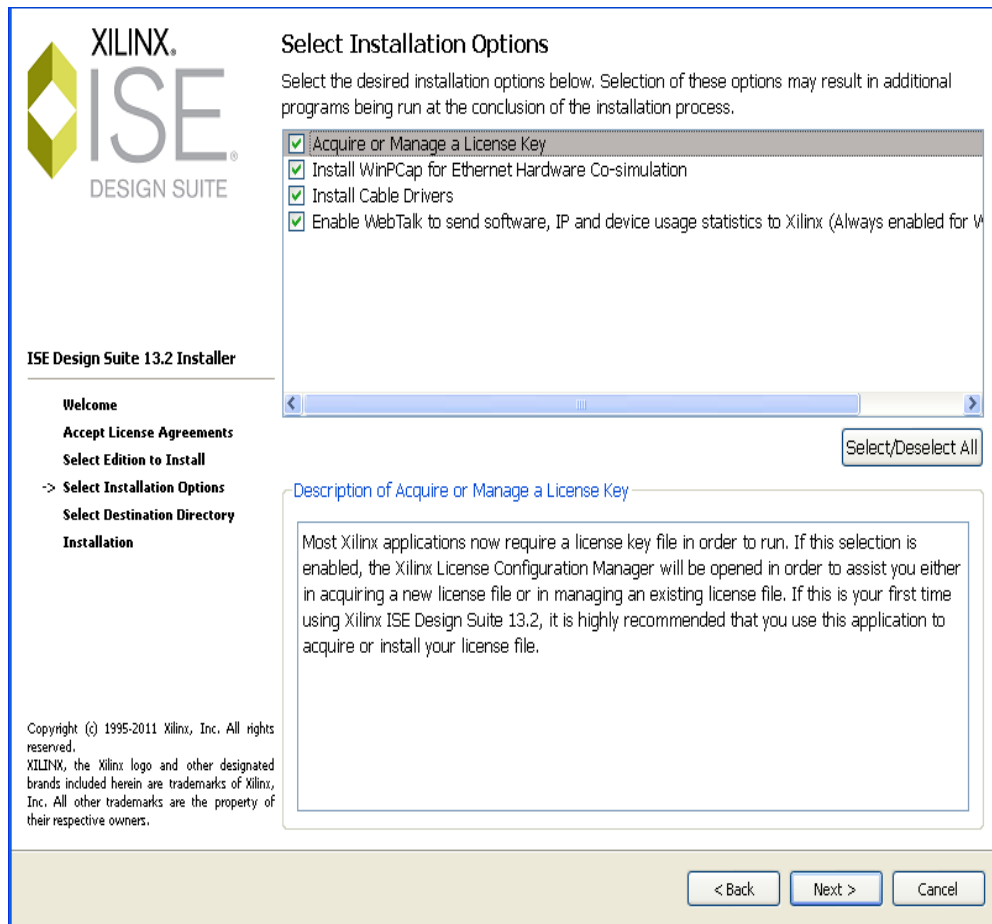


Figure 1-2: ISE Design Suite 13 Installation - Xilinx Modules and Devices

Note: WebTalk is always enabled when using WebPACK software. If the ISE WebPACK is selected on the previous screen, Enable WebTalk is not selectable. If you install an Edition product, the installer allows you to deselect Enable WebTalk. However, if a WebPACK license is used to process the design, Enable WebTalk is ignored. Please click on the Enable WebTalk item, in the installer, and read the description box for full details.

Select Destination Directory

In the Select Destination Directory screen, select the directory in which to install the software. Enter a name for the Program Folders list. The installer varies a level of hierarchy underneath the installation path you specify. The name of the directory depending on the type of product you are installing. Any Editors or WebPACK software installation creates a directory named \ISE_DS. Lab tool standalone installations create \LabTools. SDK software standalone installations create \SDK. This ensures that Edition and Standalone tools can coexist properly on your hard drive.

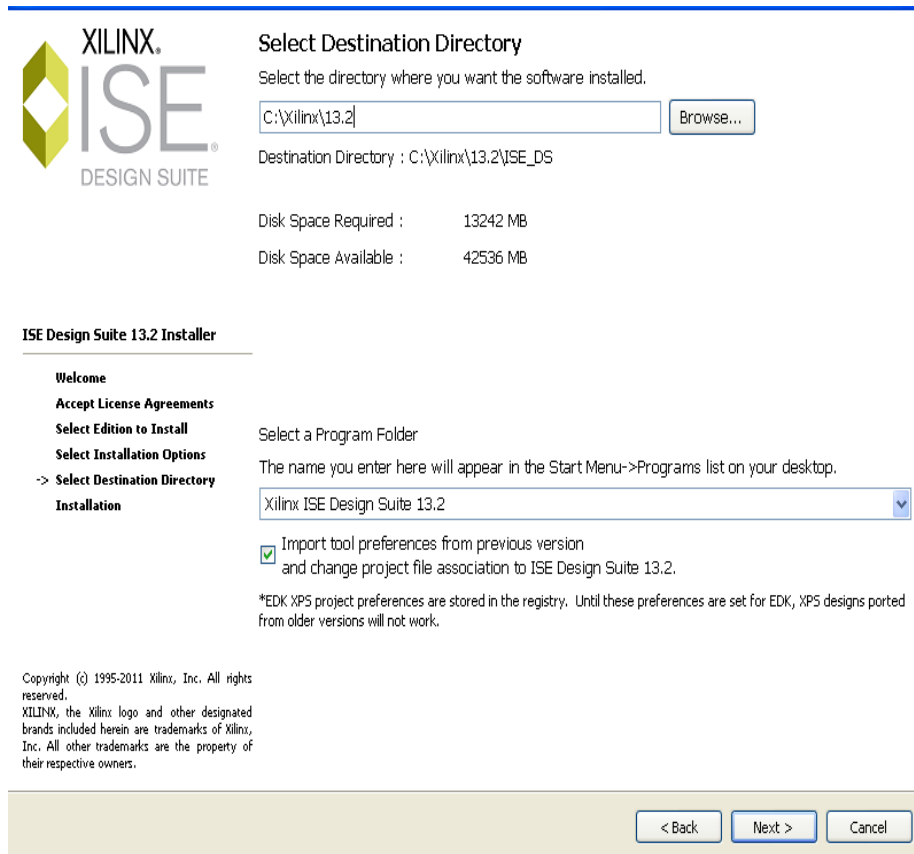


Figure 1-3: ISE Design Suite 13 Installation - Select Destination Directory

Installation Options Summary

The Installation Options Summary screen summarizes the tools, products, and options to be installed. To begin installation, click **Install**.

Near the end of the installation, the Xilinx License Configuration Manager opens by default. Follow the instructions in the Manager to obtain or locate a license file.

Note: EDK tools require the Cygwin tools distributed by RedHat. A copy of these tools is distributed with the EDK installation.

USB FLEXid Dongle Driver Installation

If you purchased a USB FLEX ID Dongle for use with the Windows operating systems, you must install the appropriate driver before creating a FLEXnet license for use with it.

1. Install the Xilinx ISE Design Suite 13.4 software first. This software contains the installer for the USB FLEXid dongle driver.
2. Run **FLEXid_Dongle_Driver_Installer.exe** from <Xilinx Installation Directory>\13.4\ISE_DS\ISE\bin\nt.
3. On the Select Options screen, be sure that only **FLEXid 9 Drivers** is checked.

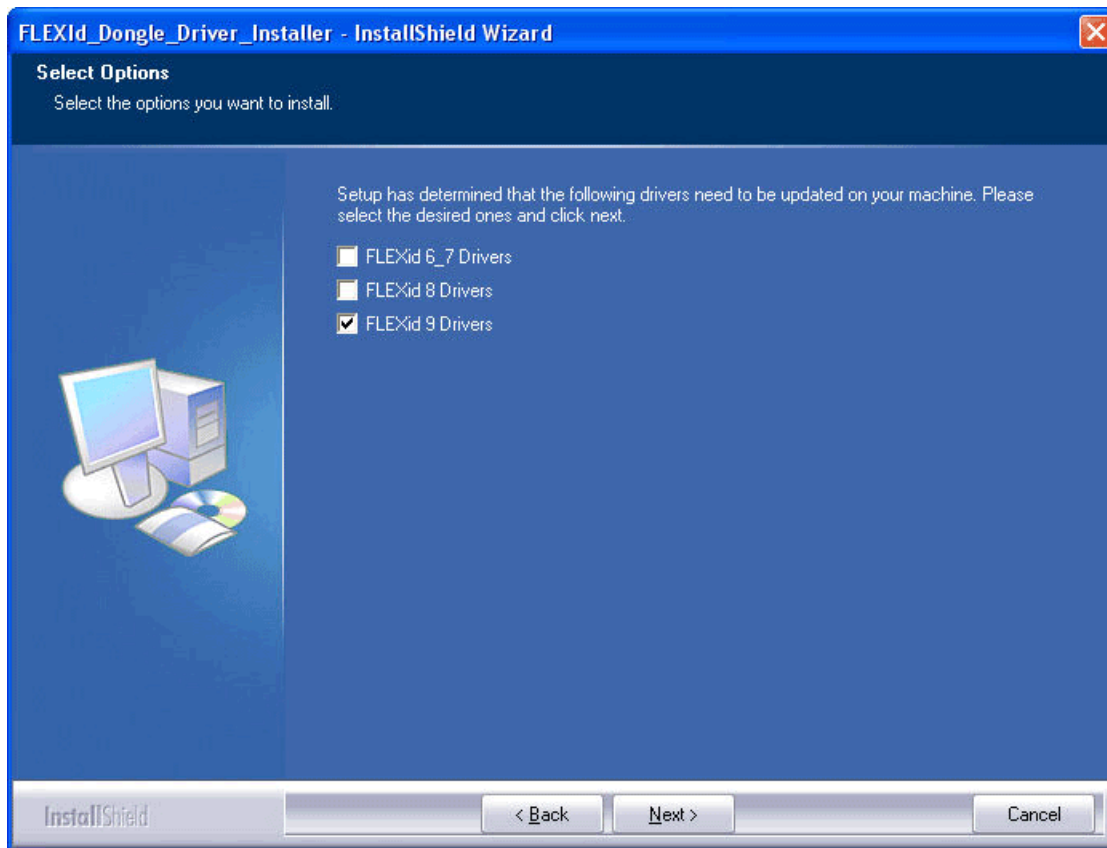


Figure 1-4: Select Options Screen

4. Click **Next** twice. The driver installs.

After installation, you will need to reboot to ensure that the dongle operates correctly.

Network Installations

Installing software to a network location provides a way for client machines to access the software by pointing to it on the network drive. To run the software on the network, the client machines must be set up correctly to ensure that the environment variables, registry, and program groups all point to the network. The following sections describe the procedure for network setups.

UNIX Clients

Each software user must source **settings32.(c)sh** or **settings64.(c)sh** (whichever is appropriate for your operating system) from the \$XILINX area in which the software is installed. This points the Xilinx environment variable, path, and LD_LIBRARY_PATH to the installed location.

To run the software applications from a remotely installed location, run an X Windows display manager, and include a DISPLAY environment variable. Define DISPLAY as the name of your display. DISPLAY is typically unix:0.0. For example, the following syntax allows you to run the software on the host named bigben and to display the graphics on the local monitor of the machine called mynode:

```
setenv DISPLAY mynode:0.0
xhost = bigbenPC Clients
```

Microsoft Windows Clients

1. Install the ISE software tools to a PC network server. Make sure that your users know the location of the software tools and have access to the installation directory, and that they have Administrator privileges for the following steps.
2. From the local client machine, browse to the following directory:
network_install_location\common\bin\nt and run the program **shortcutSetup.bat**.
Running this program sets up the Windows settings batch files and Program Group or Desktop shortcuts to run the Xilinx tools from the remote location.
3. From the client machine, launch the ISE tools by clicking the Program Group or Desktop shortcuts, or by running the applications on the network drive.

Installing to a Mounted Network Drive

Xilinx software is designed to be installed in a directory under ROOT (typically C:\Xilinx). The installer normally presents this option when installing to a local driver. When installing to a mounted network drive, if a subdirectory is not defined, it appears to the Installer as if it is installing to a ROOT directory.

To work around this issue, define your target installation directory as "Xilinx" under the network mount point (For example: "N:\Xilinx").

Obtaining Release 13 Quarterly Releases

Xilinx releases quarterly versions of the ISE Design Suite 13 software throughout the year. Each quarterly version contains device support updates, new features and bug fixes. Unlike previous releases, Release 13 quarterly releases are only available in the full installation version. There are no ways to update from, for example, Release 13.4 to Release 14.1. Instead, the Release 14.1 installer installs a complete Release 14.1 version into separate directory on the target machine. The following sections describe how to obtain software updates through XilinxNotify and the Download Center.

XilinxNotify

The XilinxNotify tool is the preferred method of obtaining software updates. It provides the following features:

- Compares the latest version of Xilinx software updates available on <http://www.xilinx.com/support> with what you have installed, and notifies you if a newer version is available.

Provides a “Download” button that will allow you to log in to the Xilinx Download Center. Once you log in, the download of your selected product begins. XilinxNotify can be run in any of the following ways:

- Automatic periodic checks at Project Navigator startup time.
- Select **Help > Check for Updates** from Project Navigator.
- Select **Start > All Programs > Xilinx ISE Design Suite 13.4 > Accessories > Check for Updates**.
- Type `xilinxnotify` in a Linux shell

Note: Select **Edit > Preferences** in Project Navigator to control the frequency of the automatic periodic checks.

XilinxNotify Network Installations

By default, the **Automatically check for software updates** option at Project Navigator startup is enabled on the machine used to install the ISE software to the network location. All clients pointing to this network location have this option disabled by default. Client users have the option of enabling this option (**Edit > Preferences > XilinxNotify** from Project Navigator) and also running manual checks.

Note: To perform a software update installation, you must have write permissions for the \$XILINX installation directory.

Download Center

Quarterly releases for all platforms are regularly made available on the Download Center at:

<http://www.xilinx.com/support/download/index.htm>

Uninstalling ISE Design Suite 13

Uninstalling on Microsoft Windows

The following sections describe how to uninstall ISE Design Suite products on Microsoft Windows.

To uninstall any Xilinx product, select the Uninstall item from that product’s Start Menu folder. For instance, to uninstall ISE WebPACK software or an ISE Design Suite: Edition, select **Start > All Programs > Xilinx ISE Design Suite 13.4 > Accessories > Uninstall**.

Depending on what you have installed, you may also need to uninstall some ancillary applications, such as WinPcap 4.0 (optional component of DSP Tools).

Before uninstalling, make sure you have moved any project files that you want to keep outside your Xilinx installation directory structure, or they will be deleted.

Uninstalling on Linux

To uninstall the Xilinx Design Suite product, you need to remove the Xilinx installation directory from the shell.

Obtaining and Managing a License (13.4)

The Xilinx® Product Licensing Site is an online service for licensing, and administering evaluation, and full copies of Xilinx software and IP products. This chapter describes the FLEXnet license generation functionality of the Product Licensing Site.

Accessing the Product Licensing Site

You can access the Xilinx Product Licensing Site is accessible in various ways depending upon the type of license being generated.

- If you purchased products, follow the link included in your order confirmation email. It will provide direct access to an account containing your product entitlements.
- To evaluate ISE® Design Suite 13 products, go to www.xilinx.com/ise_eval.
- To evaluate IP products, go to www.xilinx.com/ipcenter and follow the Evaluate link on the IP product page of interest.
- To access the Product Licensing Site directly, go to www.xilinx.com/getlicense. You must first register or enter your registration information.

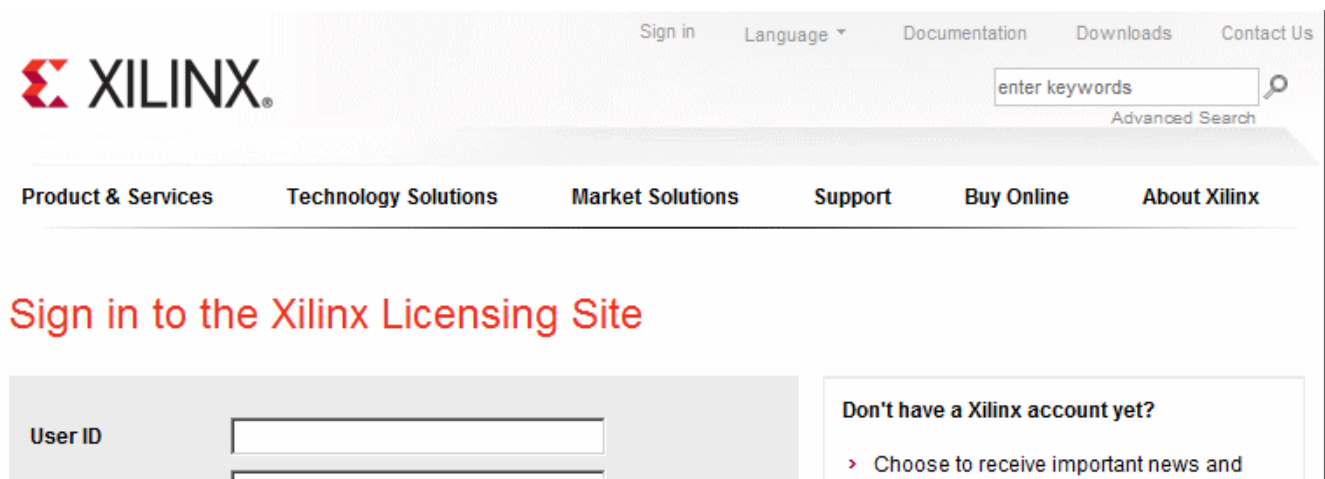


Figure 2-1: Xilinx Sign In Page

You must first sign in. If you already have a Xilinx user account, enter your user ID and password, and then confirm that your contact information is current. If you do not have an account, click the **Create Account** button.

Product Licensing Accounts

When you purchase a software or IP product from Xilinx, you are purchasing a license to use and receive updates for that product for one year. The license to use Xilinx software and IP products is managed through the use of product entitlements. A product entitlement is the determination of:

- Which product was purchased
- The number of seats purchased
- The license type (floating or node-locked)
- The product subscription period (product updates are provided throughout the year)

In addition to managing the product entitlements for your purchased software tools and IP, you can also access product entitlements for No Charge or Evaluation products. Full and No Charge licenses have a subscription period of one year. Software tools evaluations are for 30 days, and IP evaluations are for 120 days.

Activating a product entitlement results in one or more license keys being generated by the website. When installed, the license keys enable the use of the software and IP that was purchased or is being evaluated. Your product entitlements and resulting license key files are managed in a product licensing account on the Xilinx website.

Product licensing accounts are specific to the individual listed on the Xilinx Software Purchase Order, who is either the end user or administrator of the software. All purchases made can be managed in the same product licensing account if a single administrator is named. A company site can have multiple accounts managed by different administrators. The latter is helpful if a site has multiple design teams working on differing projects with different budget pools.

Note: A license key can be generated for a product entitlement that has expired; however, it will only enable product releases up to the subscription end date. Applying a product update made available after the subscription end date of your license results in an error.

LogiCORE IP License Generation In ISE Design Suite 13

LogiCORE™ IP licenses are no longer generated through lounges on the Xilinx website. The entitlement process for LogiCORE IP has been automated and uses the same electronic entitlement process as other software. When a purchase order for LogiCORE IP is entered into the Xilinx system, it is processed in less than two hours, following which you can generate LogiCORE IP licenses on the Product Licensing Site.

Any IP and software entitlements you have purchased appear in your list of entitled products when you log into the Product Licensing Site. Licenses for Evaluation and No Charge IP are available on the site in a separate area. Licenses for all your software and IP can now be generated in one pass. They are emailed to you in a single license file. IP core FLEXnet licenses now feature more licensing options, such as single or Triple-Redundant Floating Server support, and more host options for node-locked license keys: Ethernet MAC address, Hard Drive Serial Number or USB Dongle ID.

User Types and Actions

There are three user types for the Product Licensing Site: customer account administrator, end user, and evaluation user.

Customer Account Administrator

An example of a typical customer account administrator is a CAD tools manager. Every product licensing account *must* have at least one customer account administrator. A customer account administrator can manage more than one product licensing account.

The responsibilities as the customer account administrator include:

- Generating node-locked or floating licenses for Xilinx software and IP products.
- Adding and removing users from the product licensing account.
- Assigning administrative privileges to other users.
- Ordering product DVDs (if desired).

The original customer account administrator is the Ship To contact identified during the product ordering process. That person will receive an email with instructions on how to download and license each purchased product. The customer account administrator must follow the link in the email, to ensure access to the purchased products.

End User

Adding end users to a product licensing account allows an engineer or design team member the flexibility to manage and generate license keys on their own. The end user may generate license keys for node-locked products entitlements within the account as well as evaluation and "no charge" license keys for software and IP products. A customer account administrator can also configure the end user account to allow an end user to generate floating licenses. An end user cannot:

- View or generate floating license keys by default. This privilege may be assigned to them by the customer account administrator.
- View the license keys generated by other users.
- Add or remove other users to or from the product licensing account.

Evaluation User

Evaluation users can:

- Generate a 30-day free evaluation license key for ISE Design Suite 13: System Edition.
- Generate license keys for evaluation and no charge IP products.
- Request an ISE Design Suite 13 DVD with one of the following Shipping Options:
 - ◆ Free Shipping (2-4 Weeks)
 - ◆ Standard (2-3 Days)
 - ◆ Overnight

Note: A customer who is already licensed for a full version of an ISE Design Suite product edition can evaluate other ISE Design Suite product editions or IP. These product entitlements are made available in the same product licensing account.

All user types can download products electronically and request an ISE Design Suite 13 DVD.

Creating a License Key File

The Create New Licenses tab on the Product Licensing Site is the starting point for license key file generation. The software tool and IP product entitlements you have purchased or wish to evaluate are shown in the product entitlement table.

Home : [Support](#) : Product Licensing

Product Licensing

Looking to register 10.1 or earlier software products? [Help](#)

Account:

[Create New Licenses](#) [Manage Licenses](#) [Manage Users](#)

Redeem Voucher [?](#)

xxxx-xxxxxx-xxxx-xxxxxxx

[Redeem Now](#)

Evaluation and No Charge Cores [?](#)

Search the **Evaluation** and **No Charge** cores catalog and add specific cores to table below [Search Now](#)

Create a New License File for Account: Xilinx

Create a new license file by making your product selections from the table below. Floating and Node-Locked licenses cannot be combined in the same license file. [?](#)

	Product	Type	License	Available Seats	Status	Subscription End Date
<input type="checkbox"/>	ISE Design Suite: System Edition	Evaluation	Node	1/1	Current	30 days
<input checked="" type="checkbox"/>	ChipscopePro Standalone Including Serial IO Toolkit	Full	Floating	49/50	Current	31 Mar 2012
<input type="checkbox"/>	Embedded Developers Kit, Node-Locked License	Full	Node	48/50	Current	31 Mar 2012
<input checked="" type="checkbox"/>	ISE Design Suite: System Edition	Full	Floating	50/50	Current	31 Mar 2012
<input type="checkbox"/>	ISE Design Suite - Embedded Edition, Floating License	Full	Floating	44/50	Current	31 Mar 2012

[Generate Floating License](#) [Generate Node-Locked License](#)

What is the difference between a floating and a node license? [?](#)

Jobs Investors Feedback Legal Privacy Trademarks Sitemap

© Copyright 2010 Xilinx

Figure 2-2: Create New License

Selecting Products

To begin the license generation process for products you have purchased or want to evaluate:

1. Select a product licensing account from the Account drop-down list.
Note: This selection is not available if you are entitled to evaluation or free products only.
2. Enter product voucher codes for Software or IP product licenses purchased with kits (optional).
3. Add evaluation or no-charge IP product entitlements to the product entitlement table (optional).
4. Make your product selections from the product entitlement table.

The type of product entitlements available are Full (purchased), No Charge, or Evaluation. Full and No Charge licenses have a subscription period of one year. Software tools evaluation is for 30 days. IP evaluations are for 120 days.

Floating and node-locked licenses cannot be combined in the same license key file.

Note: A floating license resides on a network server and enables applications to check out a license when they are invoked. At any one time, the number of licenses for simultaneous users is restricted to the number of license seats purchased. A node-locked license allows for the use of a single seat of a product entitlement on a specific machine.

For software tools, available seats represents the number of seats available for licensing over the total number of seats purchased. For IP, seats are managed according to the terms of the site wide license agreement.

Products with a status of Current are within their warranty period. Products with a status of Expired have a warranty period end date that has passed. If seats are available, licenses can be generated for either Current or Expired product entitlements.

The ISE Design Suite: System Edition evaluation product entitlement provides access to all the capabilities in the ISE Design Suite tool set. This product entitlement is automatically included in your product licensing account.

Product vouchers for Software and IP product licenses may be shipped with a Xilinx or partner development board or design kit. If you have a product voucher card, you may enter the voucher code on the card into the associated text field and click Redeem Now. This places the corresponding Software or IP product entitlement in the product entitlement table which you can use to generate a license key.

To add Evaluation and No Charge IP to the list of product entitlements, click the Search Now button within the Add Evaluation and No Charge IP Cores section of the page. This opens an IP product finder tool.

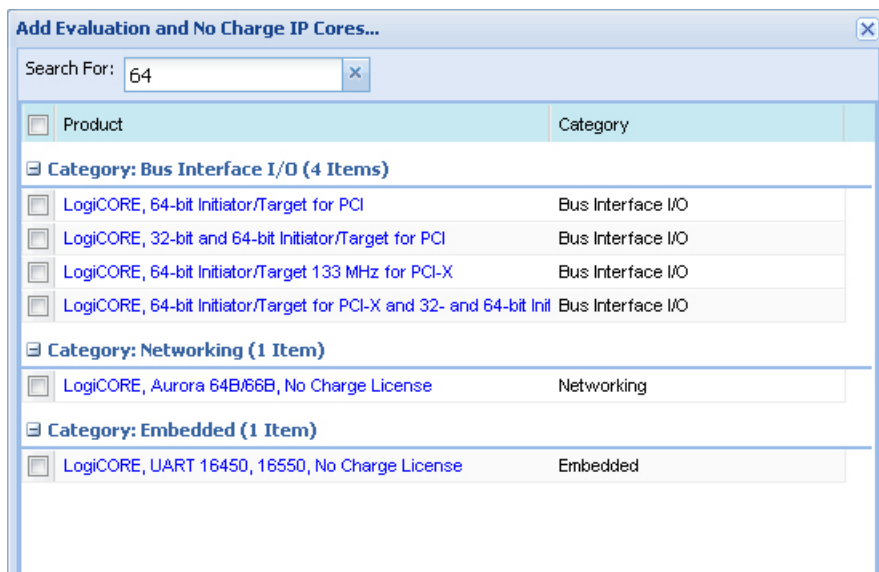


Figure 2-3: IP Product Selector

Note: IP products are typically sold as site licenses that gives the administrator the ability to generate license keys for floating and node-locked license types. End users see only product entitlements for node-locked products. The customer account administrator, or an End User who has been granted Floating License generation status by the administrator, sees product entitlements for both node-locked and floating products.

Generating a License

Click the **Generate License** button that corresponds to the type of license key file you are generating (floating or node-locked). The license generation form shown below appears.

Generate Floating License
*Fields marked with an asterisk * are required.*

1 PRODUCT SELECTION

Product Selections *	Product	Type	Available Seats	Subscription End Date	Requested Seats
<input checked="" type="checkbox"/>	ChipscopePro Standalone Including	Full	50/50	30 MAR 2012	50
<input checked="" type="checkbox"/>	I SE Design Suite: System Edition	Full	50/50	30 MAR 2012	50

2 SYSTEM INFORMATION

License: Floating

Redundancy [?](#) Non-Redundant Triple Redundant

Host ID [?](#)

3 COMMENTS

Comments [?](#)

Figure 2-4: Generate Floating License

To generate floating licenses:

1. Select the number of seats required for each product license.

This is for floating licenses only. All node-locked licenses are for one seat. The number of seats available for a product entitlement is automatically maintained by the system. The Requested Seats field is populated, by default, with the full number of seats remaining on the product entitlement. A product is removed from the product entitlement table if all seats have been activated.

2. Enter system information.

System information is pre-populated in the option menu if you arrived at the Product Licensing Site from a link within the Xilinx License Configuration Manager (XLCM).

A redundant server configuration provides a fail over for the license manager software. As long as two of the three servers are running, the license manager can continue to run.

If you do not have pre-populated system information, or if you want to add a different host, select the **Add a host** option.

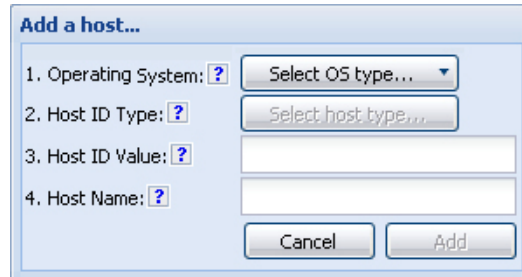


Figure 2-5: Add a Host

The host ID value uniquely identifies the machine to which your software tools or IP is licensed. You may choose a host ID type to be a MAC address, a hard drive serial number, a dongle ID, or a Solaris host ID.

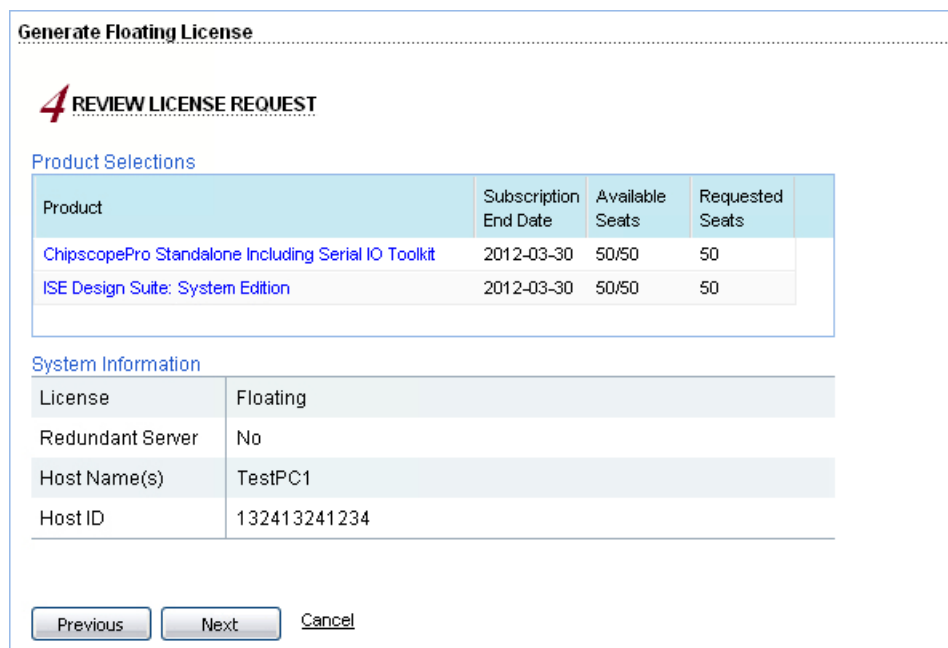
Note: Not all host ID types are supported for all operating systems. The easiest way to obtain your host ID is to run the XLCM on the machine that will serve as the license host.

3. Add a comment.

Adding a comment to the license key file makes it easier for an administrator to track the allocation of software and IP product entitlements among users.

4. Click **Next**.

The Review License Request form opens.



Generate Floating License

4 REVIEW LICENSE REQUEST

Product Selections

Product	Subscription End Date	Available Seats	Requested Seats
ChipscopePro Standalone Including Serial IO Toolkit	2012-03-30	50/50	50
ISE Design Suite: System Edition	2012-03-30	50/50	50

System Information

License	Floating
Redundant Server	No
Host Name(s)	TestPC1
Host ID	132413241234

Previous Next Cancel

Figure 2-6: Review License Request

5. Review your selections.

- If you are satisfied with your selections, click **Next**.

End User License Agreements (EULAs)

ISE Design Suite Software tools and No Charge IP product End User License Agreements (EULAs) are agreed to during the product installation process. If you license IP products, you must accept the terms of the associated IP product EULAs before the license file can be generated.

Third-Party Licenses

A complete copy of the third-party licenses for 13.4 is located at:
<install_directory>/common/licenses/unified_3rd_party_eula.txt

License Generation Confirmation

When you finish generating the licenses, you will receive a confirmation message summarizing your licensing activity.

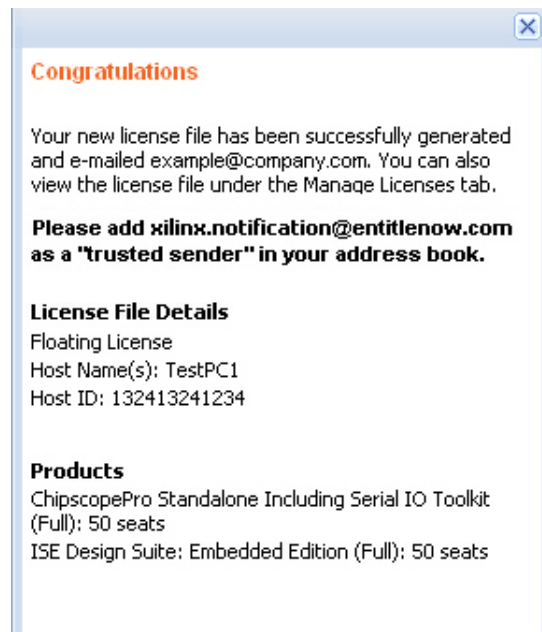


Figure 2-7: License Generation Confirmation

You will also receive a license generation confirmation email. This message contains the license key file that was generated as an attachment. Add 'xilinx.notification@entitlenow.com' as a trusted sender in your email address book.

Managing License Key Files

The Product Licensing Site tracks your license key files. Select the Manage Licenses tab to see all license key files for your product licensing account.

My Account | Sign Out | Language | Documentation | Downloads | Contact Us

XILINX enter keywords Advanced Search

Product & Services | Technology Solutions | Market Solutions | Support | Buy Online | About Xilinx

Home : Support : Product Licensing
Product Licensing

Looking to register 10.1 or earlier software products?

Account: Help

[Create New Licenses](#) [Manage Licenses](#) [Manage Users](#)

Manage License Files for Account: Xilinx Test Account

Host Name	Host Type	Host ID	License Type	OS	Created By	Created Date
TestPC1	Ethernet MAC	132413241234	Floating	Windows 32-bit	Demo User	30 MAR 2011
TestPC2	Ethernet MAC	abcde12abcde	Node	Windows 32-bit	Demo User	30 MAR 2011
TestPC4	Ethernet MAC	129012901290	Node	Windows 32-bit	Demo User	30 MAR 2011

TomTestPC1 **132413241234** **Floating** **Tom Hirsh** **30 MAR 2009**

Comments
ISE Design Suite product licenses for Portland design team. Reference PO #123456.

Product	Type	Status	Subscription End Date	Activated Seats
ISE Design Suite: Embedded Edit	Full	Current	30 MAR 2012	40
ChipscopePro Standalone Includ	Full	Current	30 MAR 2012	50

[Modify License](#)

Jobs | Investors | Feedback | Legal | Privacy | Trademarks | Sitemap

© Copyright 2010 Xilinx

Figure 2-8: Manage Licenses

Use the Manage Licenses page, to perform the actions described below.

Exploring and Retrieving Your Existing License Key Files

Information regarding the license key files in your product licensing account are displayed in a Master/Detail view. Click a row in the master view in the top table, to see detailed information about the license key file in the detail view in the bottom table. The detail view table displays:

- A list of product entitlements that have been activated in the key file.
- Comments associated with the key file.

The detail view table gives you the ability to:

- Download, email, or copy and paste the contents of the license key file (click the corresponding icons on the lower left portion of the detail view).
- Delete a license key file.
- View the end user license agreement.

Modifying a License Key File

To modify an existing license key file, select the license key file in the master view, then click **Modify License** in the detail view. You can modify a license key file as follows:

- Rehost or change the license server host for a license key file.
- Activate or add additional seats to an existing licensed product entitlement.
- Deactivate or remove seats from an existing licensed product entitlement.
- Activate or add additional product entitlements to a license key file.
- Deactivate or delete product entitlements from a license key file.

Modifying a key file uses the same input form as when the license key file was created, except that additional product entitlements of the same license type (floating or node-locked) are made available for licensing.

Reclaiming Deactivated Product Entitlements

A product entitlement is deactivated when one of the following occurs:

- Rehosting or changing the license server host for a license key file.
- Deactivating or removing seats from an existing licensed product entitlement.
- Deactivating or deleting product entitlements from a license key file.

The license generation facility allows the reallocation of the deactivated seats or product entitlements by making the corresponding seats or product entitlements available for activation in the product entitlements table on the Create License page.

Before the reallocation of entitlement occurs, you must first agree to an Affidavit of Destruction. This legal agreement is required to ensure that the deactivated product entitlements are no longer being used.

The number of allocation operations is recorded for each user. Administrators are allowed to reallocate product entitlements five times per major release. End users are allowed to reallocate product entitlements three times per major release.

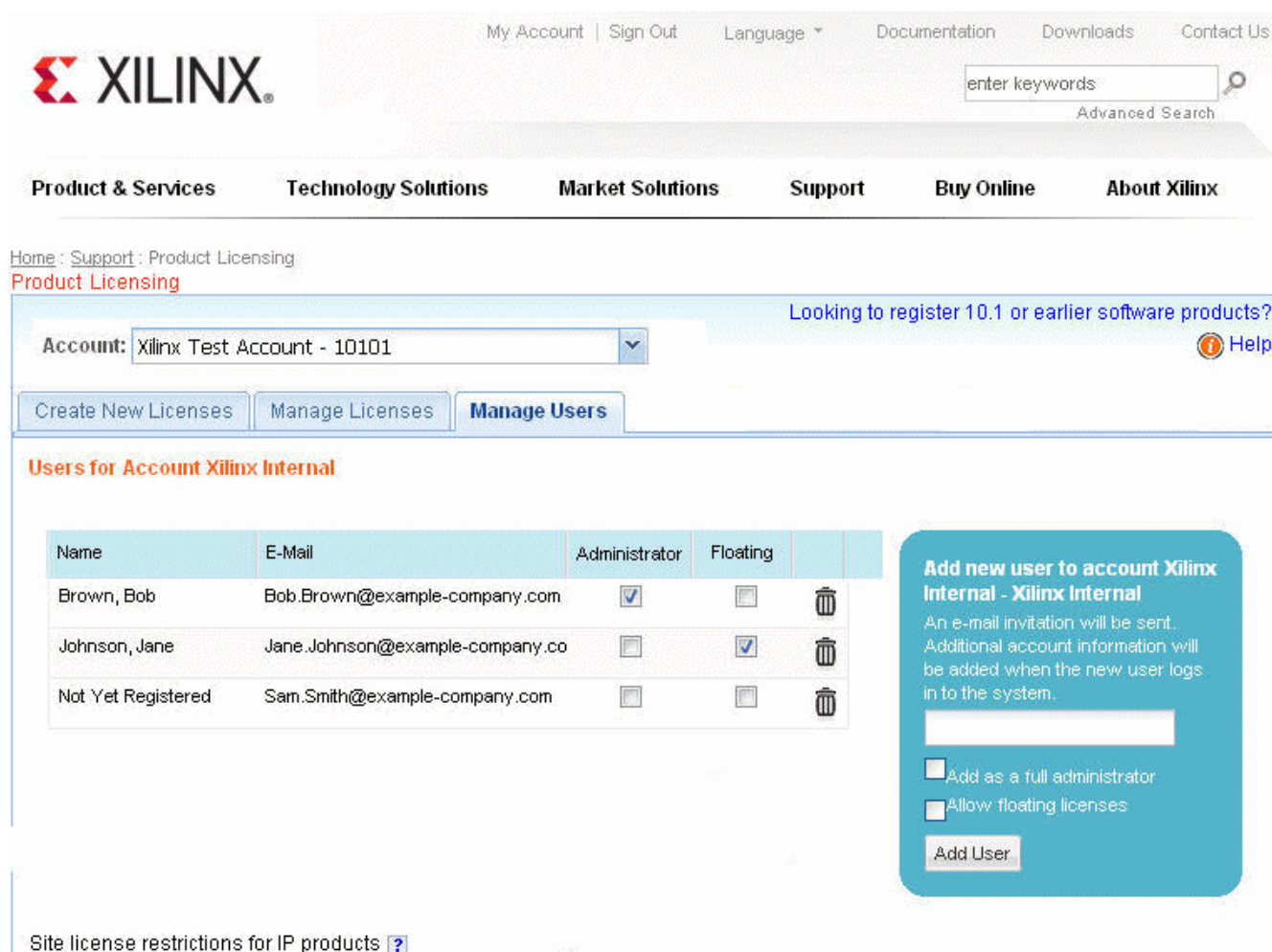
What Happens to Your License Key File

For each product entitlement that is activated, a FLEXnet increment line and corresponding package line is added to the license key file. When a license key file is modified to activate (add) seats for an existing or new product entitlement, additional increment or package lines are added to the license key file.

When a license key file is rehosted or is modified to deactivate (delete) seats or product entitlements, the corresponding increment lines are regenerated or removed from the modified license key file.

Managing User Access to Product Licensing Account

The responsibility of administering a product licensing account may be transferred or shared with another user. The ability to add or remove users from a product licensing account is managed under the Manage Users tab.



My Account | Sign Out | Language | Documentation | Downloads | Contact Us

XILINX enter keywords Advanced Search

Product & Services | Technology Solutions | Market Solutions | Support | Buy Online | About Xilinx

Home : Support : Product Licensing
Product Licensing

Account: Xilinx Test Account - 10101

Looking to register 10.1 or earlier software products?

Create New Licenses | Manage Licenses | **Manage Users**

Users for Account Xilinx Internal

Name	E-Mail	Administrator	Floating	
Brown, Bob	Bob.Brown@example-company.com	<input checked="" type="checkbox"/>	<input type="checkbox"/>	<input type="button" value="trash"/>
Johnson, Jane	Jane.Johnson@example-company.co	<input type="checkbox"/>	<input checked="" type="checkbox"/>	<input type="button" value="trash"/>
Not Yet Registered	Sam.Smith@example-company.com	<input type="checkbox"/>	<input type="checkbox"/>	<input type="button" value="trash"/>

Add new user to account Xilinx Internal - Xilinx Internal
An e-mail invitation will be sent. Additional account information will be added when the new user logs in to the system.

Add as a full administrator
 Allow floating licenses

Site license restrictions for IP products

Figure 2-9: Manage Users

Adding Users

To add a user to your product licensing account:

1. Type in the corporate email address of the new user.
2. Check **Add as a full administrator**, to grant the new user customer account administrative privileges. Check **Allow Floating Licenses**, to grant the new user the ability to generate Floating Licenses, but not have full administrative privileges.

Note: The email address you provide must be the same email address the user supplied or supplies when creating their Xilinx account. If not, the user may not be properly recognized when logging in.

If a user has already logged into the Product Licensing Site, their name appears in the user list. If the user has never been to the site, the words Not Yet Registered appears in the space for their name. Once the user has signed in, their name is filled in.

In some instances, a customer account administrator may wish to have design team members administer license key files for their own use. By leaving both Add as full administrator and Allow Floating Licenses check boxes unchecked, the user is granted the following restricted privileges:

- Can generate node-locked license keys only.
- Can view and modify only those license key files they generated for themselves.
- Cannot manage users.

If you check Allow Floating Licenses only, the restriction on node-locked keys is lifted, but the others remain. You cannot check both boxes since it is not allowed. Full administrators already have floating license generation capability.

Removing Users

To remove administrative or floating license generation privileges from a user, uncheck the Administrator or Floating check box for that user.

To remove a user from a product licensing account, click the Trash can icon for that user.

Installing Your License Key File

Node Lock License Installation

After generating a license file, you will receive an e-mail from 'xilinx.notification@entitlenow.com'.

1. Save the license file attached to the e-mail to a temporary directory on your local system.
2. Run the Xilinx License Configuration Manager:
 - ◆ For Windows: Select **Start > All Programs > Xilinx ISE Design Suite 13.4 > Accessories > Manage Xilinx Licenses**.
 - ◆ For Linux: Type **xlcm** in a command-line shell.
3. Click **Copy License** at the top of the Manage Xilinx Licenses tab.
4. Browse to your license file (`Xilinx.lic`) and click **Open**.

This copies the license file to the `C:\.Xilinx` (Windows) or `<Home>/ .Xilinx` directory of your computer where it will be automatically found by the Xilinx tools.

5. When the Copy License operation is complete, the table on the Manage Xilinx Licenses tab is updated with licensing information from the license file.

6. Click **Close** to exit the Xilinx License Configuration Manager.

Floating License Installation on Servers

For existing FLEXnet license servers, a common practice is to copy the contents of the license file, mailed from 'xilinx.notification@entitlenow.com', into the existing license file on your FLEXnet server.

Note: Restart the floating license server to enable the Xilinx licenses.

For New License Servers

1. Download the appropriate Xilinx FLEXnet license utilities for your server's operating system from the Xilinx Download Center:
<http://www.xilinx.com/download/index.htm>
2. Unzip these utilities into a destination directory. Xilinx recommends that you place this directory into your application search path.
3. Once the FLEXnet utilities are installed, run the following commands to start the floating license server:
 - ◆ Linux
 - <Server Tool directory>/bin/linux/lmgrd -c <path_to_license>/Xilinx.lic -l <path_to_license>/log1.log
 - <Server Tool directory> bin/linux64/lmgrd -c <path_to_license>/Xilinx.lic -l <path_to_license>/log1.log
 - ◆ Windows
 - < Server Tool directory>\bin\nt\lmgrd -c <path_to_license>\Xilinx.lic -l <path_to_license>\log1.log
 - < Server Tool directory>\bin\nt64\lmgrd -c <path_to_license>\Xilinx.lic -l <path_to_license>\log1.log

Client Machines Pointing to a Floating License

1. Run the Xilinx License Configuration Manager (XLCM).
2. Click the Manage Xilinx Licenses tab.
3. On the Manage Xilinx Licenses tab, enter the network path to the license server in the port@server format into the XILINXD_LICENSE_FILE field. Click **Set**. The default Xilinx port number is 2100.

Note: For Linux operating systems, licensing environment variables cannot be set using the Xilinx License Configuration Manager (XLCM). The environment variable fields are read only, and they are grayed out and there are no Set buttons. The environment variable must be set using the appropriate shell and commands.

